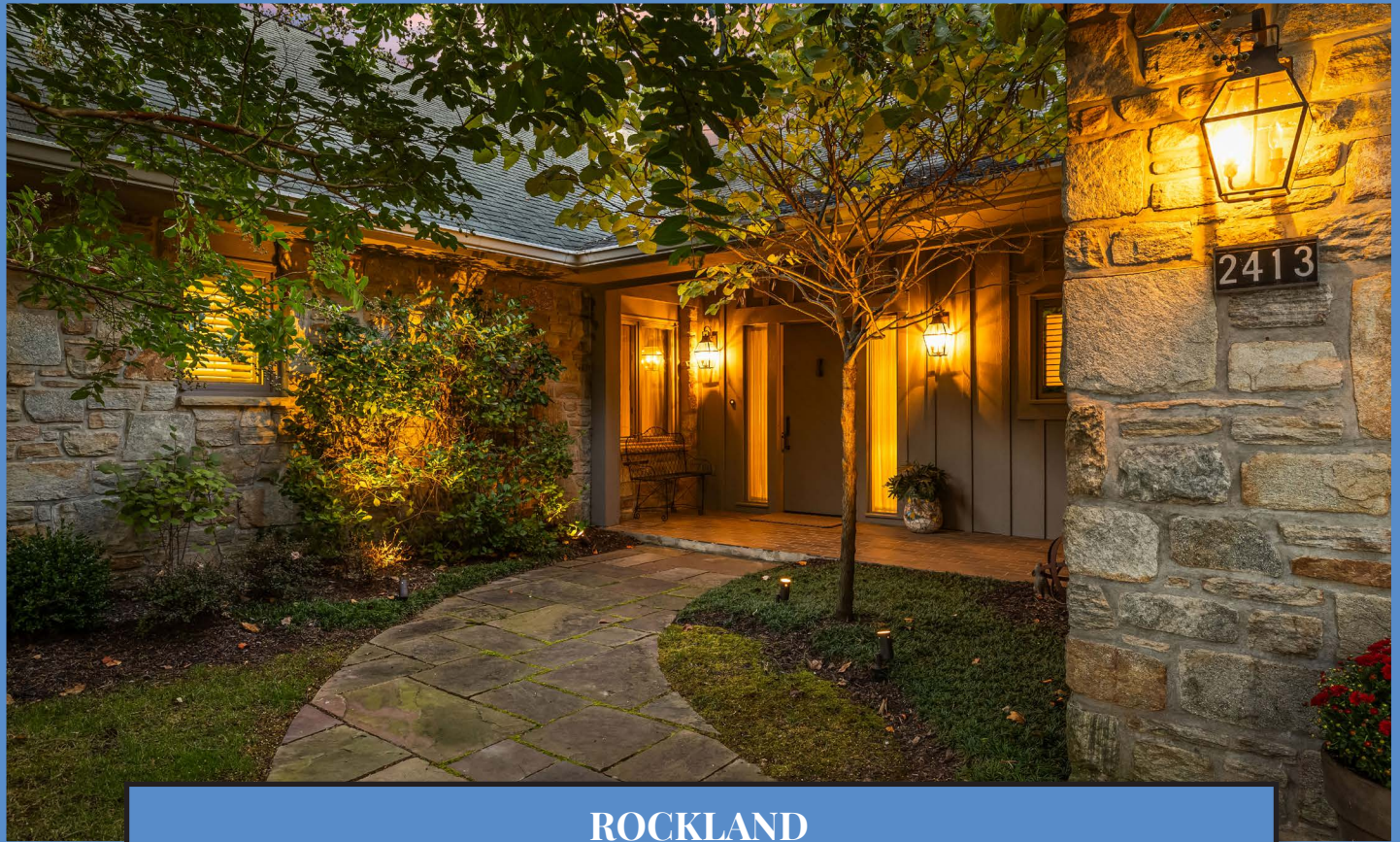


*Hubble
Bisbee*

CHRISTIE'S
INTERNATIONAL REAL ESTATE



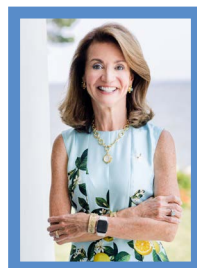
ROCKLAND
2413 STILL FOREST ROAD



LOCATIONS

2330 W Joppa Road, Suite 104
Lutherville, MD 21093

181 Harry S Truman Pkwy Ste 200
Annapolis, MD 21401



KAREN HUBBLE BISBEE

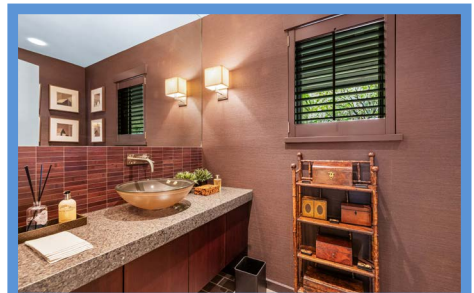
Principal, Associate Broker, ABR, GRI

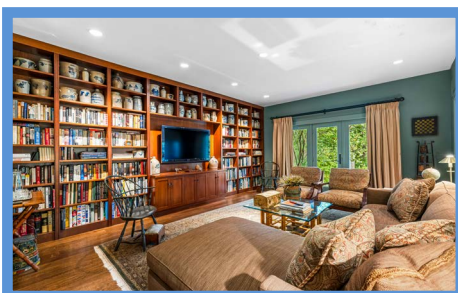
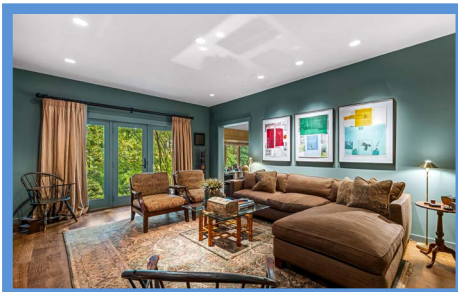
Karen@HubbleBisbee.com

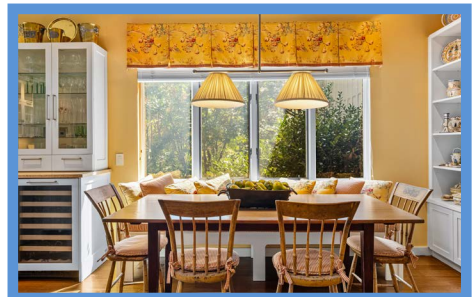
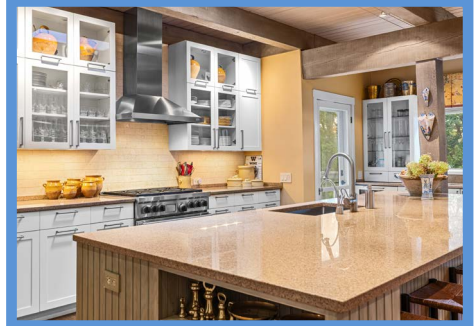
443-838-0438 (Mobile)

410-321-1411 (Office)

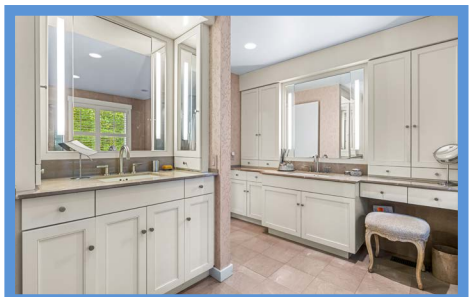
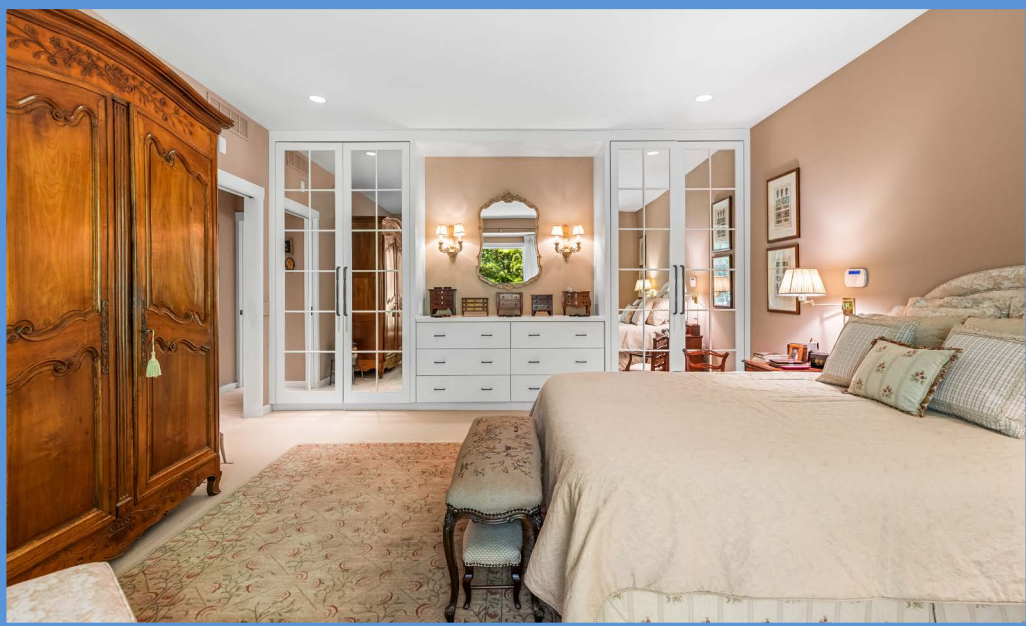
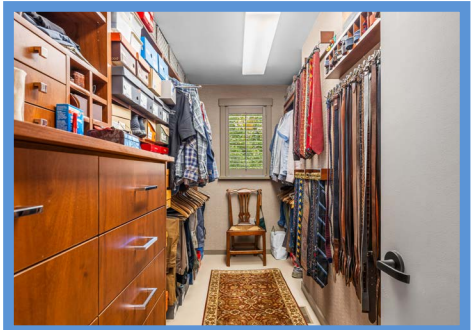
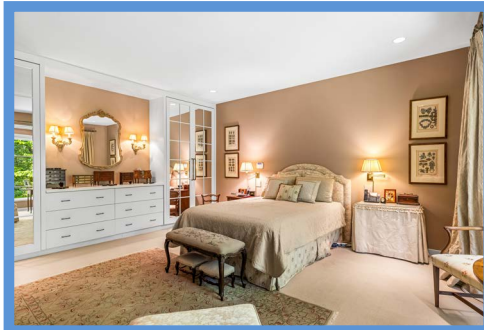
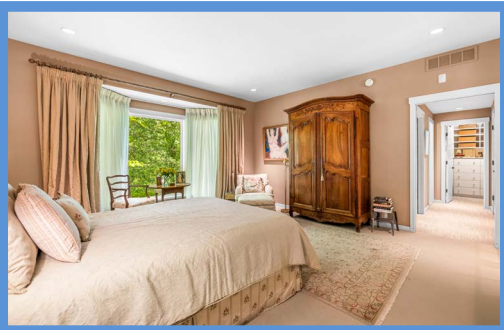
WWW.HUBBLEBISBEE.COM | (410) 321-1411 (OFFICE) | 











FOYER 23'2" X 10'0"

- Diagonal plank entry door with sidelights
- Brick floor
- Beaded wood paneled walls
- Window with custom drapery treatment
- Deep coat closet
- Utility closet with Trane HVAC unit with gas heat and AO Smith electric water heater
- Recessed lighting
- Access to Garage
- Access to Dining Room at Kitchen
- Access to Bedroom Hall
- Wide portal/passage to Family Room
- Wide post and beam portal to Living Room

LIVING ROOM 22'7" X 18'6"

- Wide plank hardwood flooring
- Beamed ceiling
- Stone fireplace with gas log insert, stone hearth, wood mantel shelf and beaded wood paneled chimney wall
- Glazed door with full-size sidelights to Deck
- Triple window with plantation shutters
- Recessed lighting
- Dual access to Sunroom flanking fireplace
- Open flow to Dining Room

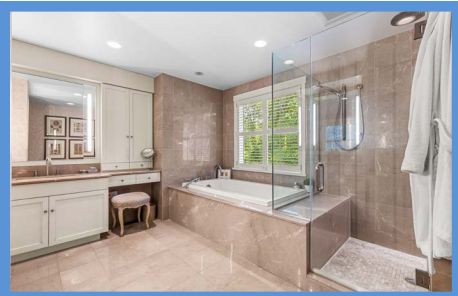
DINING ROOM 18'6" X 14'10"

- Wide plank hardwood flooring
- Beamed ceiling
- Open oak staircase to Lower Level with wraparound banister overlook and carpet runner
- Triple window with plantation shutters
- Recessed lighting
- Brass 6-light chandelier with shades
- Two brass wall sconce lights with shades
- Built-in ceiling speakers
- Pocket door to Kitchen

KITCHEN 24'7" X 20'8"

- Hardwood flooring
- Wood-paneled beamed ceiling with post and beam
- White Shaker style solid wood cabinetry with contrasting-finish oversize island/breakfast bar, glass-door cabinets, upper-tier cabinets, pot-pan drawers, utensil drawers, under-breakfast bar storage cabinets, tray cabinet, roll-out trays, roll-out pantry base cabinet, roll-out liquor base cabinet, pull-out trash/recycle bins, bookcases, dovetailed drawers and soft-close cabinets/drawers
- Matching wet bar with undermount sink with basin rack and Insinkerator disposal, Bosch dishwasher with matching front panel and Marvel under-counter wine cooler
- Full-width wall of 7 matching full-size doors with 7 upper storage bins, refrigerator/freezer panels, access to desk, pantry closet and Laundry Room

- Granite counters, island/breakfast bar and wet bar
- Marble backsplash
- Thermador refrigerator with matching front panel
- Thermador freezer with matching front panel
- Additional marvel under-counter wine cooler
- Scotsman icemaker with matching front panel
- Wolf stainless steel commercial grade 6-burner gas range
- Best stainless steel range hood to ceiling with lighting
- Thermador stainless steel wall oven, built-in microwave and warming drawer
- Additional Bosch dishwasher with matching front panel
- Oversize undermount stainless steel sink on island with basin rack, filtered hot/cold water dispenser and Insinkerator disposal
- Full-width wall of custom built-in bookcases with base cabinets matching kitchen cabinets and TV niche with Sharp wall mounted TV
- Dining area with 4-casement window, plantation blind, custom valence and built-in bench with custom cushion
- Double window at wet bar with plantation blind and custom cushion
- Skylight



- Glazed door to Deck with interior screened door
- Double doors concealing built-in desk with upper shelving, base cabinet and lighting
- Double doors to custom fitted double pantry closet
- Cable track lighting
- Double pendant light with shades in dining area
- Under-cabinet lighting
- Access to Laundry Room

SUNROOM 18'5" X 10'9"

- Dual access from Living Room
- Brick floor
- Vaulted wood paneled ceiling with beams
- Stone chimney wall
- Three floor-length triple windows with woven shades
- Ceiling mount lighting
- Ceiling fan
- Cased portal to Family Room

FAMILY ROOM 22'10" X 14'9"

- Wide plank hardwood flooring
- Full-width wall of custom built-in cherry bookcases with base cabinets and TV niche with Sharp wall mounted TV
- Atrium door with full-size sidelights to Patio with custom drapery treatment
- Recessed lighting
- Portal passage to Foyer

POWDER ROOM 8'1" X 4'9"

- Access from Foyer
- Brick floor
- Full-width cantilevered vanity with granite top, glass vessel sink, wood tile backsplash, plate glass mirror and wall scone lighting
- Toto flush
- Window with plantation shutters
- Recessed lighting
- Exhaust fan

LAUNDRY ROOM 13'0" X 7'8"

- Concealed entry door from Kitchen
- Brick floor
- Built-in open base cabinets with granite counter
- Two walls of wall-mounted

- shelving
- Stainless steel utility sink
- Maytag washer and dryer
- Frigidaire refrigerator
- Tappan freezer
- Pull-down stairs to storage attic
- Fluorescent lighting

BEDROOM HALL 13'8" X 4'0"

- Double door access from Foyer
- Wall-to-wall carpeting
- Double closet
- Recessed lighting
- Access to Primary Bedroom Suite, Bedroom 2 and Hall Bath

PRIMARY SUITE HALL

- Wall-to-wall carpeting
- Double linen closet
- Recessed lighting
- Access to Primary Bedroom, Primary Bath and both Dressing Rooms

PRIMARY BEDROOM

18'8" X 15'3"

- Pocket door entry
- Wall-to-wall carpeting
- Wall of custom built-in cabinetry including 2 custom fitted closets with mirrored French doors flanking built-in dresser with 2 wall scone lights with shades
- Walk-in bay window with custom drapery treatments
- Recessed lighting

PRIMARY BATH 13'1" X 12'7"

- Heated marble floor
- Marble tub platform, shower stall walls and bath wall to ceiling
- Wide vanity/dressing table with marble top, Kohler undermount sink, upper cabinets and framed plate glass mirror with vertical lighting
- Vanity with marble top, Kohler undermount sink, upper cabinets, framed plate glass mirror with vertical lighting and 2 mirror-door medicine cabinets with lower drawer
- Bain Ultra aerator soaking tub with handheld shower
- Glass enclosed shower stall with built-in bench, rain shower, additional shower, handheld shower and 2 body sprays
- Toto flush

- Double window with plantation shutters
- Exhaust fan

DRESSING ROOM 1 9'4" X 8'11"

- Wall-to-wall carpeting
- Custom fitted wardrobe cabinetry including clothes racks, open shelving, drawers and shoe shelving
- Fluorescent light

DRESSING ROOM 2 13'1" X 6'6"

- Wall-to-wall carpeting
- Custom fitted wardrobe cabinetry including clothes racks, open shelving, drawers, belt cubbies, tie racks, shoe shelving and belt rack
- Window with plantation shutter
- Fluorescent lighting

BEDROOM 2 15'3" X 13'4"

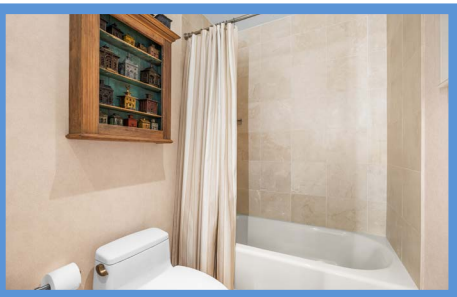
- Wall-to-wall carpeting
- Walk-in bay window with custom drapery treatments
- Custom fitted double closet
- Recessed lighting

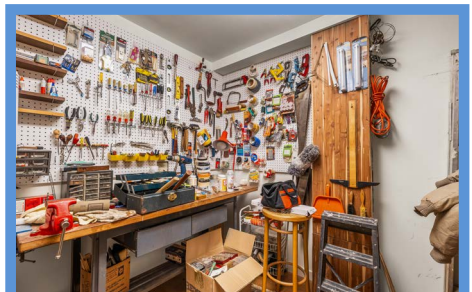
GUEST BATH 11'3" X 5'0"

- Marble floor and tub surround to ceiling
- Full-width vanity with marble top, Kohler undermount sink and plate glass mirror with vertical lighting
- Tub/shower combination
- Toto flush
- Window with plantation shutter
- Recessed lighting
- Exhaust fan

GARAGE 24'9" X 20'7"

- Two-car
- Automatic door opener
- Electric service panels
- Pegboard wall panels
- Storage shelving
- In-ground irrigation control
- Access to Foyer





LOWER LEVEL

RECREATION ROOM 31'9" X 18'6"

- Open carpeted staircase access
- Hardwood flooring
- Stone chimney with woodburning fireplace on stone hearth
- Bar with granite top, base cabinet, under-counter refrigerator, U-Line wine cooler and wall mount shelving
- Built-in bookshelves flanking fireplace
- Wall mounted art display racks
- Triple window with plantation blind
- Recessed lighting and track lighting
- Flows to Hall
- Wide portal to Studio

STUDIO 23'7" X 11'3"

- Hardwood flooring
- Three sets of sliding glass doors each with full-size sidelight
- Base cabinet with granite top, stainless steel undermount sink and wall cabinets
- Built-in shelving and storage cabinets
- Fluorescent lighting

HALL

- Hardwood flooring
- Utility closet with Trane HVAC heat pump unit and AO Smith electric water heater- 2019

- Walk-in shelved closet
- Workshop (9' X 8') with hardwood flooring, workbench with pegboard wall panels, storage shelving and GE security system
- Access to Bedroom 3 and Bath 3

BEDROOM 3 17'3" X 15'7"

- Wall-to-wall carpeting
- Four-casement window with plantation blind and custom drapery treatment
- Custom fitted walk-in closet
- Large custom fitted walk-in cedar closet
- Built-in bookcase
- Recessed lighting

BATH 3 9'3" X 5'1"

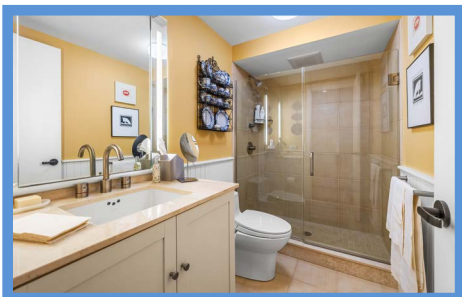
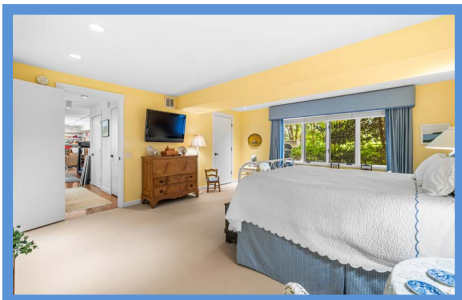
- Ceramic tile floor and shower stall
- Beadboard wainscot
- Vanity with marble top, Kohler undermount sink, plate glass mirror and vertical lighting
- Full-width shower stall with glass door enclosure
- Toto flush
- Ceiling light
- Exhaust fan

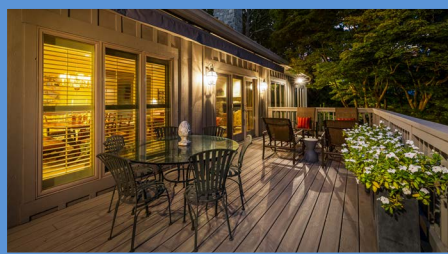
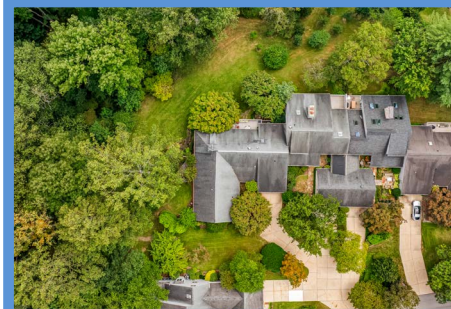
EXTERIOR

- Stone with wood siding
- Architectural asphalt shingle roof
- Stone garden wall with garden courtyard and stone walkway to covered front porch
- Stone steps flanked by stone planter boxes from Family Room to stone

- patio with boulder garden steps with steel railing to yard
- Elevated Deck (29' X 11') above Studio with wood railings, electronic retractable awning, gas grill hookup and access from Living Room and Kitchen
- Lower stone patio with radius stone garden wall
- Stone walkway from Studio and Garden Shed- connects to boulder garden steps
- Garden shed below Sunroom with double door entry, workbench, pegboard wall panels, storage shelving, base cabinets and wall cabinets
- Backs to large open very private greenspace grading down to wooded hillside
- Great quiet location in gated Rockland community close to Greenspring Station, expressways and an easy commute to Towson and downtown Baltimore
- Gatehouse with 24-hour security
- Community pool
- Community tennis courts

All information contained herein deemed reliable but not guaranteed by the Broker





*Hubble
Bisbee*

CHRISTIE'S
INTERNATIONAL REAL ESTATE

GREEN SPRING
STATION
410-321-1411



ANNAPOLIS
410-321-1833

